



# DRYCOOL™ HD

Desiccant Dehumidifier



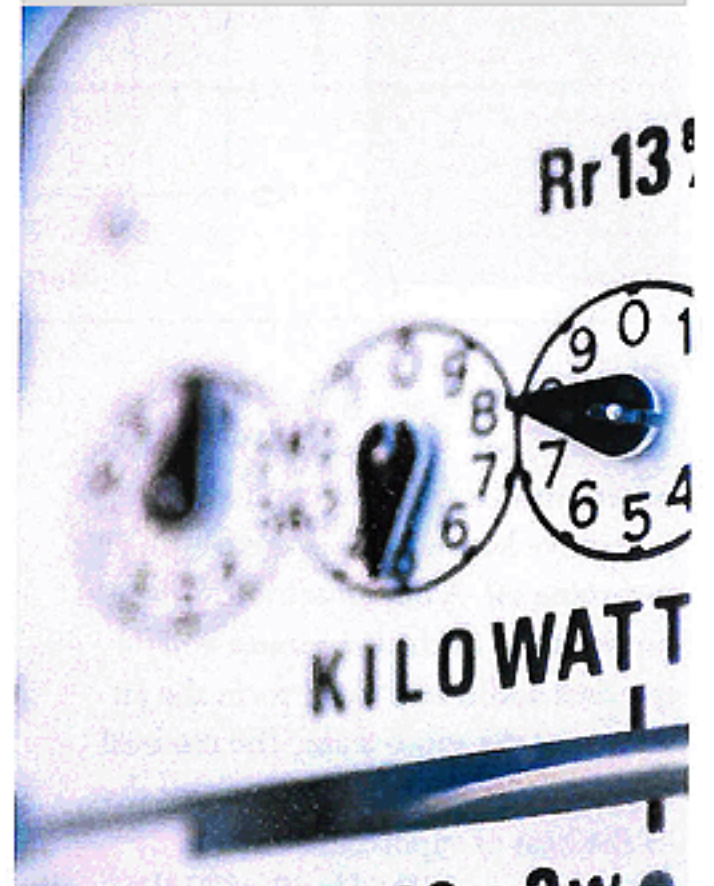
## Product Description & Advantages

The Munters DryCool™ HD desiccant dehumidifier provides significant drying capability in a small package. The unit utilizes a refrigerant circuit in conjunction with a heat reactivated desiccant wheel to provide efficient drying capability. Due to the capabilities of the desiccant wheel, the unit can continue to provide substantial capacity and low supply dew point conditions.

The hybrid desiccant refrigeration cycle provides the most efficient small dehumidifier available. In addition, the supply air is discharged at approximately space neutral temperature so that it does not add additional cooling load to the space.

The DryCool™ HD operates cost-effectively because all of the energy required for the operation of the desiccant dehumidifier cycle is recycled from the cooling components. The system utilizes a de-humidistat to cycle the capacity on when the humidity in the space is high and to cycle the capacity off when the space humidity is at the desired condition.

PRODUCT INFORMATION™™  
**DRYCOOL™ HD**



## BENEFITS

- Affordable dehumidification
- Uses environmentally friendly refrigerant R-410a
- Compact size for installations in small spaces
- Prevents mold and mildew
- Total indoor air quality options available

## TYPICAL APPLICATIONS

School classroom, residential (whole home dehumidifier), light commercial, non-critical storage



## DRYCOOL™ HD

Capacities & Performance

Blower  
250 CFM @ 0.4" ESP

Capacity  
5 lbs/hr @ 80°F, 60% RH

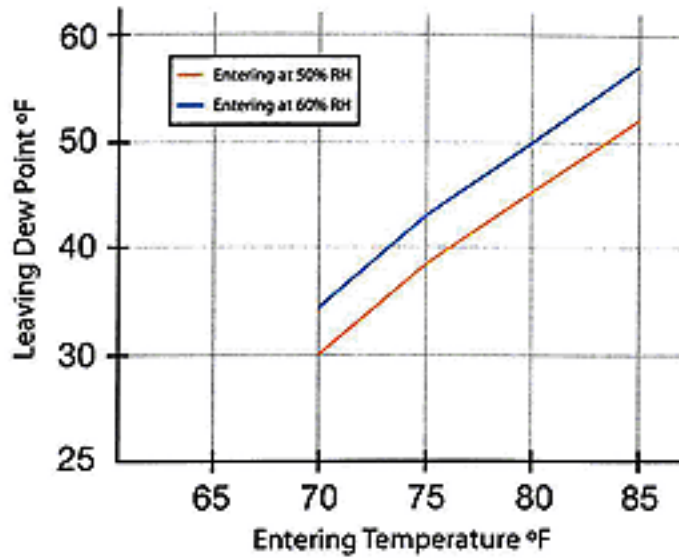
Optional Filter  
MERV 13

Optional UV Light

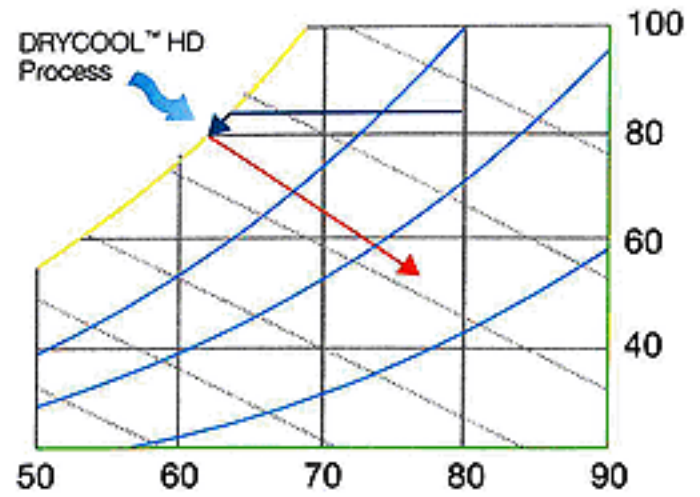
Efficiency  
3.3 Liters per KW

Electrical (Typical  
Operating Amperage)  
6.8 amps @ 120 volt 60 HZ

## DRYCOOL™ HD Performance



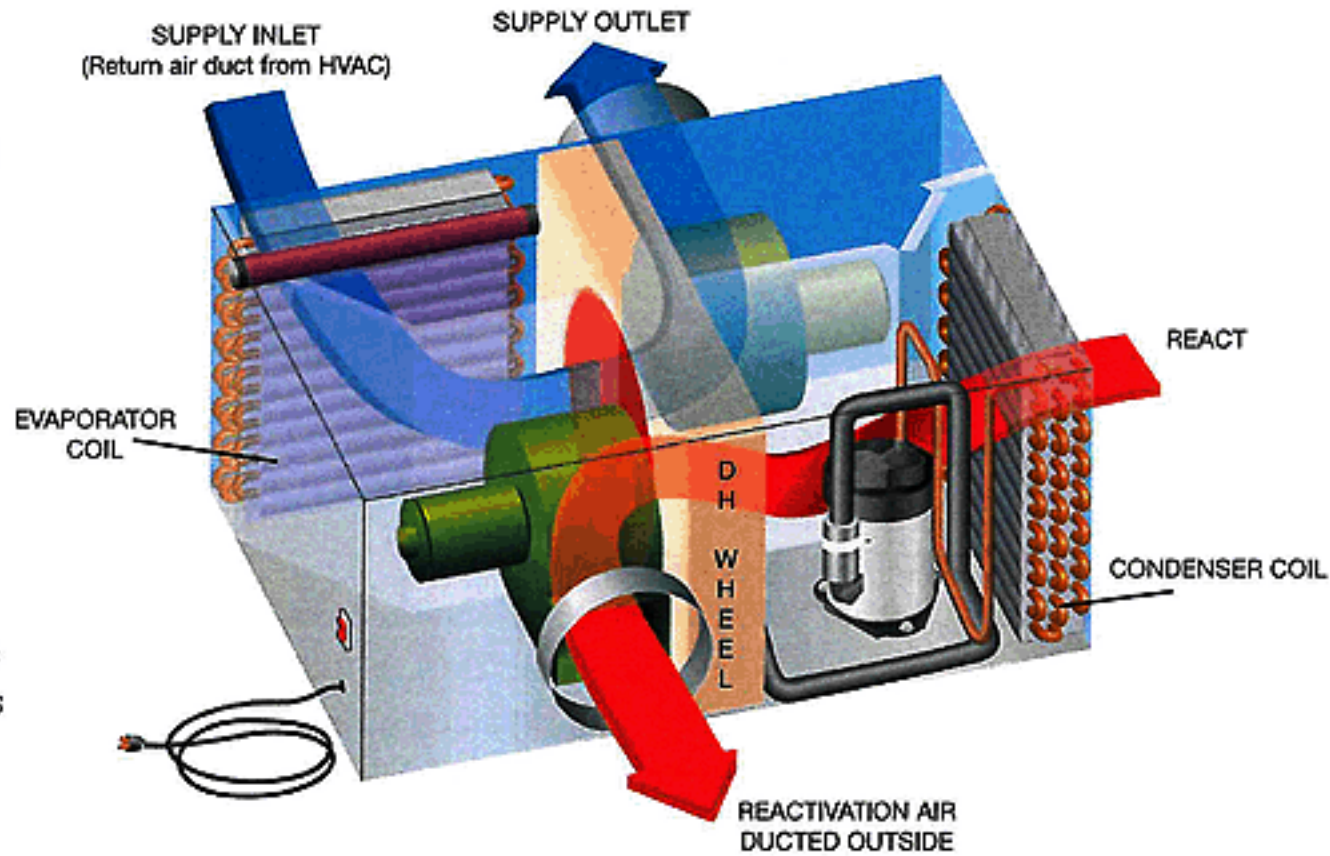
## DRYCOOL™ HD Psychrometric Advantage



## How it Works

The DryCool™ HD uses a refrigeration system similar to an air conditioner to remove heat and moisture from the incoming air. A dehumidification wheel downstream of the evaporator coil removes additional water from the air stream in the vapor state. The removal of moisture causes the air to warm due to the heat of vaporization of the water in the air. The DryCool™ HD dehumidifier uses two air streams to accomplish this task of providing cool dry air at high efficiencies. The supply air stream sends cool dry air to the space while the reactivation air stream removes the water collected by the wheel and sends it to the outside.

## DryCool™ HD Airflow Illustration



Unit Dimensions			Unit Connect Dimensions			
Width	Length	Height	Supply Inlet	Supply Outlet	React Inlet	React Outlet
24"	36"	16.5"	16" x 14"	8" Round	14" x 12"	8" Round

Note: Square to Rounds can be provided for Supply and React inlets



4915 Arendell St. #313  
Morehead City, NC 28557  
Tel: 262-727-0994  
Fax: 252-727-0996  
bmil@bmil.com  
[www.drycoolhd.com](http://www.drycoolhd.com)

Munters Corporation

